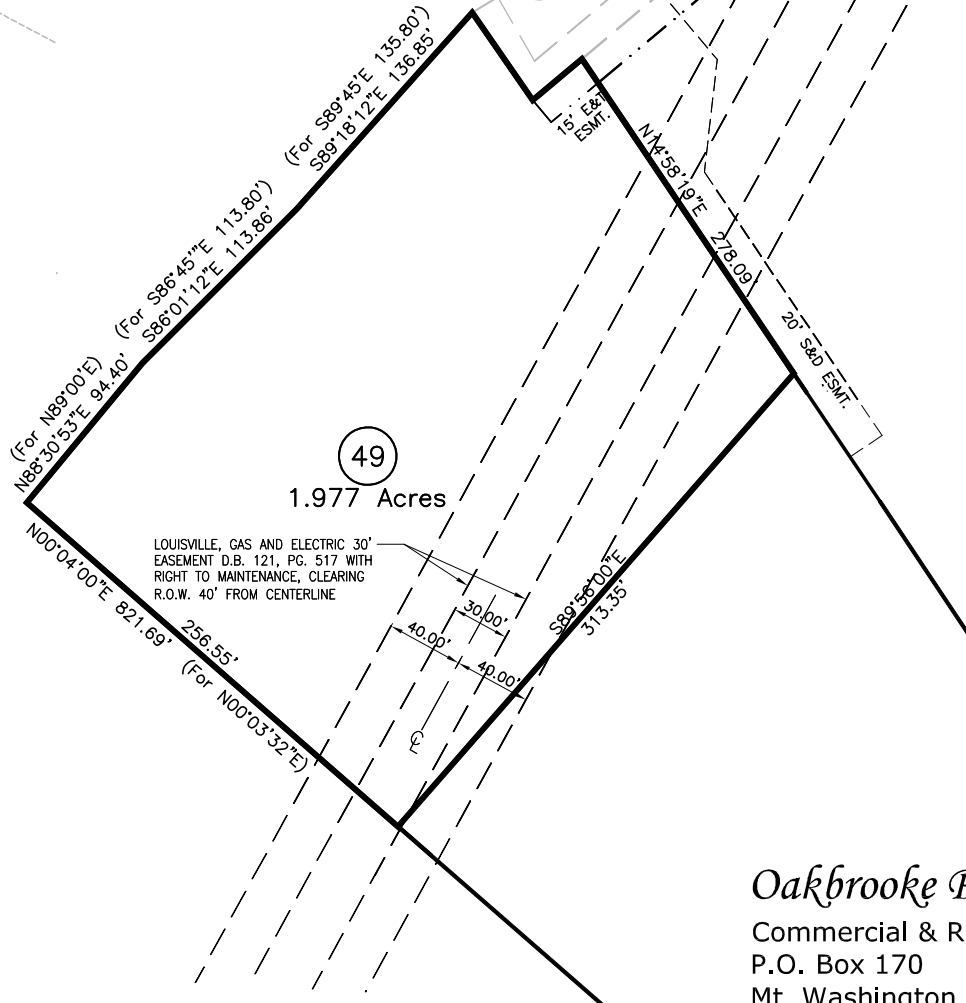
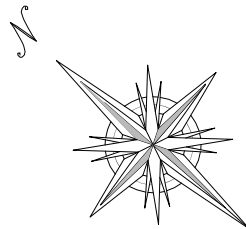


KEY MAP



49  
1.977 Acres

LOUISVILLE, GAS AND ELECTRIC 30' EASEMENT D.B. 121, PG. 517 WITH RIGHT TO MAINTENANCE, CLEARING R.O.W. 40' FROM CENTERLINE

*Eastbrooke Pointe*  
*Section 3*  
*Lot 49*

SEE RECORD PLAT FOR FINAL DIMENSIONS, EASEMENTS AND BUILDING RESTRICTIONS

*Oakbrooke Properties, LLC*  
Commercial & Residential Properties  
P.O. Box 170  
Mt. Washington, KY 40047  
Phone 502-538-4085 Fax 502-538-4237  
[www.kdkdevelopments.com](http://www.kdkdevelopments.com)