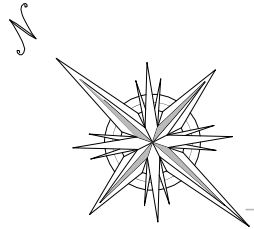
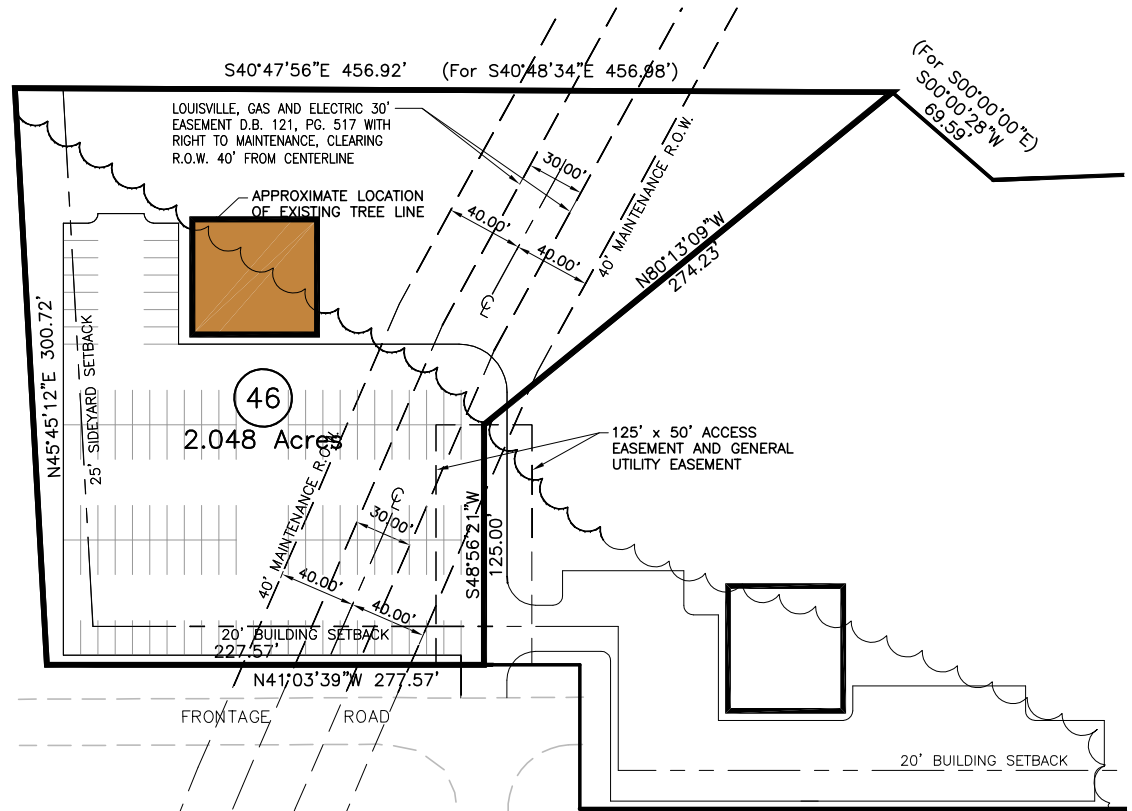


KEY MAP



Bardstown Bypass (US 31-E)

**BUILDINGS AND PAVEMENT  
SHOWN HEREON  
ARE FOR ILLUSTRATED  
PURPOSES ONLY**

SEE RECORD PLAT FOR FINAL DIMENSIONS,  
EASEMENTS AND BUILDING RESTRICTIONS

*Oakbrooke Properties, LLC*  
Commercial & Residential Properties  
P.O. Box 170  
Mt. Washington, KY 40047  
Phone 502-538-4085 Fax 502-538-4237  
www.kdkdevelopments.com

*Eastbrooke Pointe  
Section 3  
Lot 46*